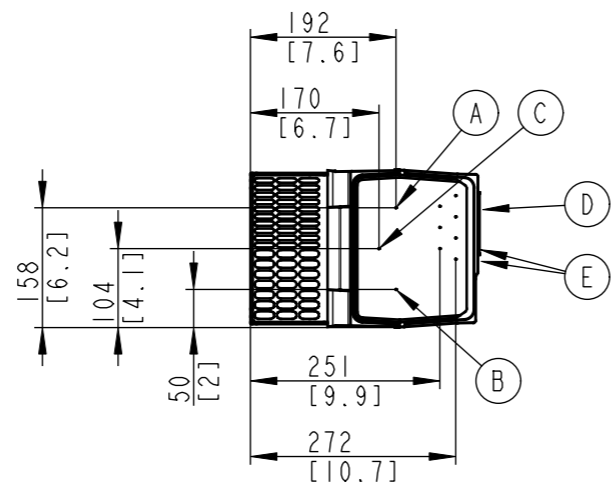
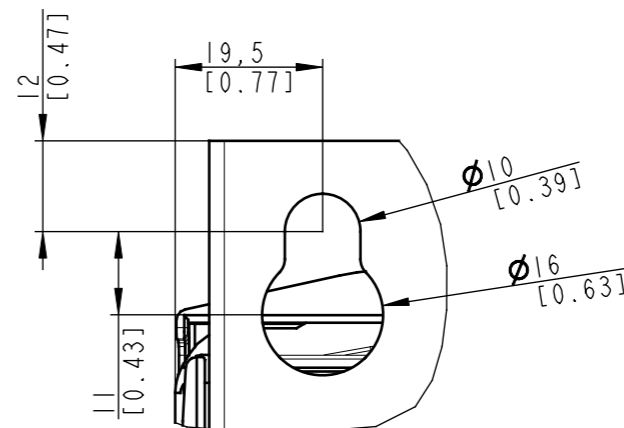


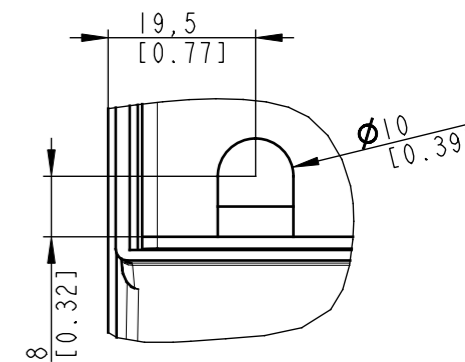
| Type | Value |
|------------|-------------|
| Max Weight | 28kg / 61lb |
| IP Class | IP21 |
| UL Type | Type I |



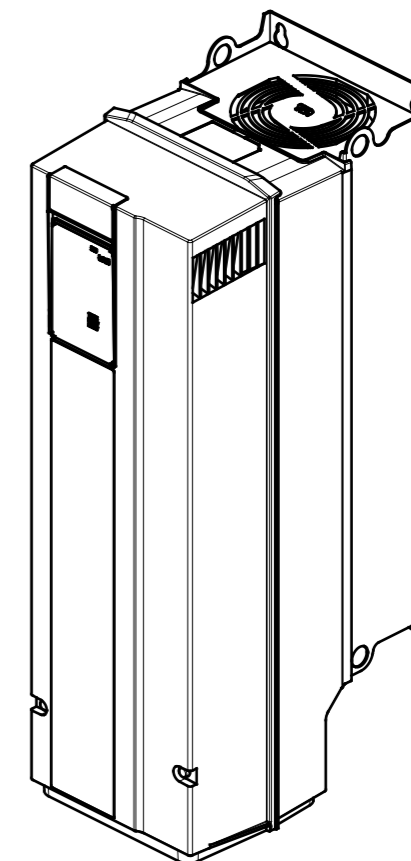
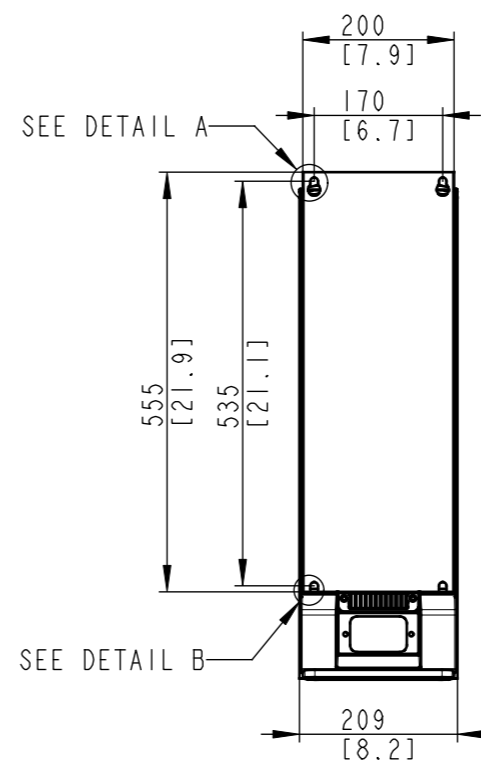
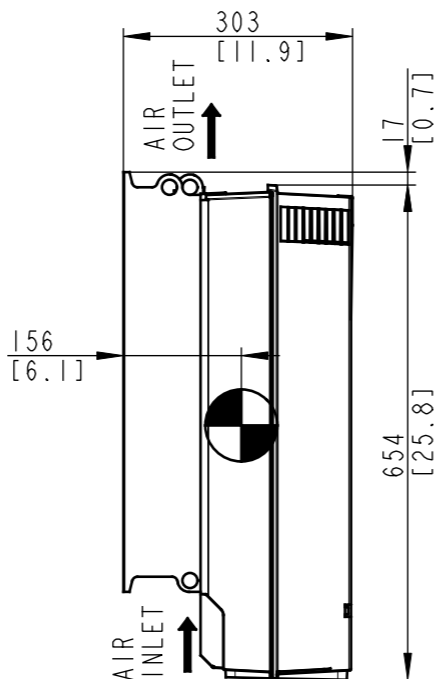
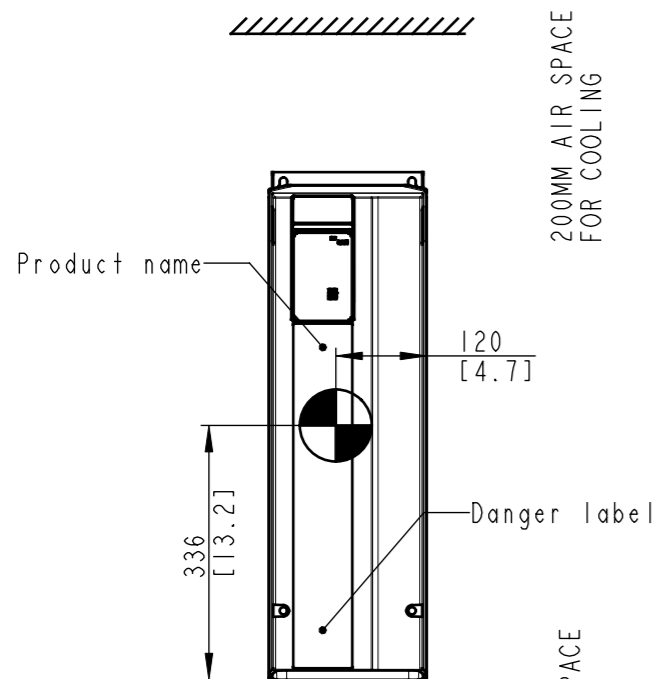
SEE PAGE 2 FOR DETAILS



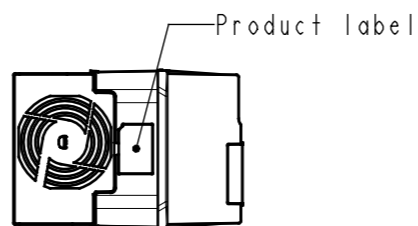
DETAIL A
SCALE 1:1



DETAIL B
SCALE 1:1



| Position of connectors | |
|------------------------|-----------------|
| A | Line |
| B | Motor |
| C | Brake / DC |
| D | Interface X0 |
| E | Interface X1/X2 |

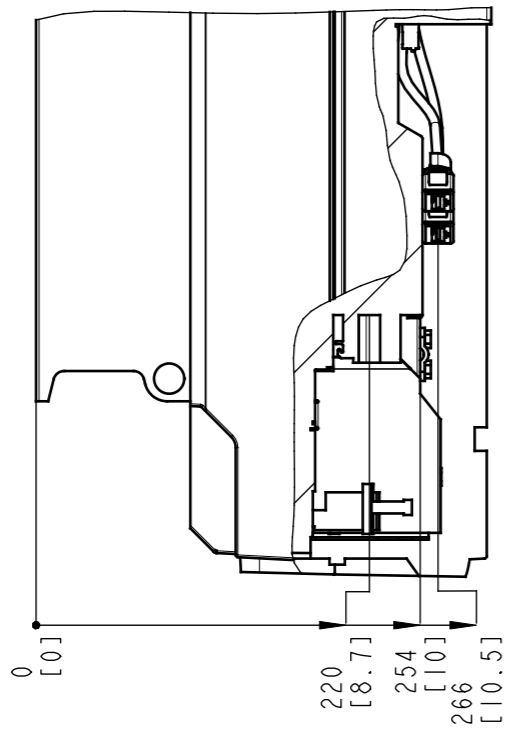


THIS DRAWING SHOWS THE MOST COMMON VERSION OF THIS PRODUCT VARIANT. SMALL DIFFERENCES MAY OCCUR DEPENDING ON THE FINAL PRODUCT CONFIGURATION.

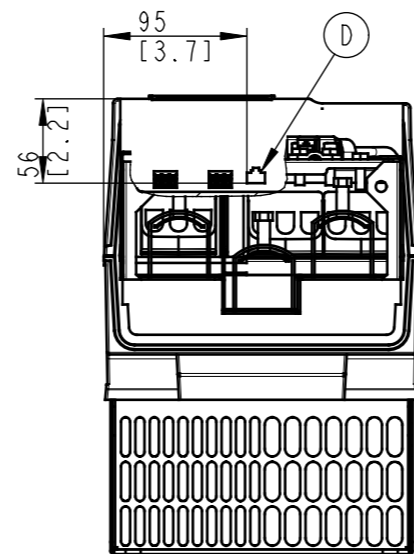
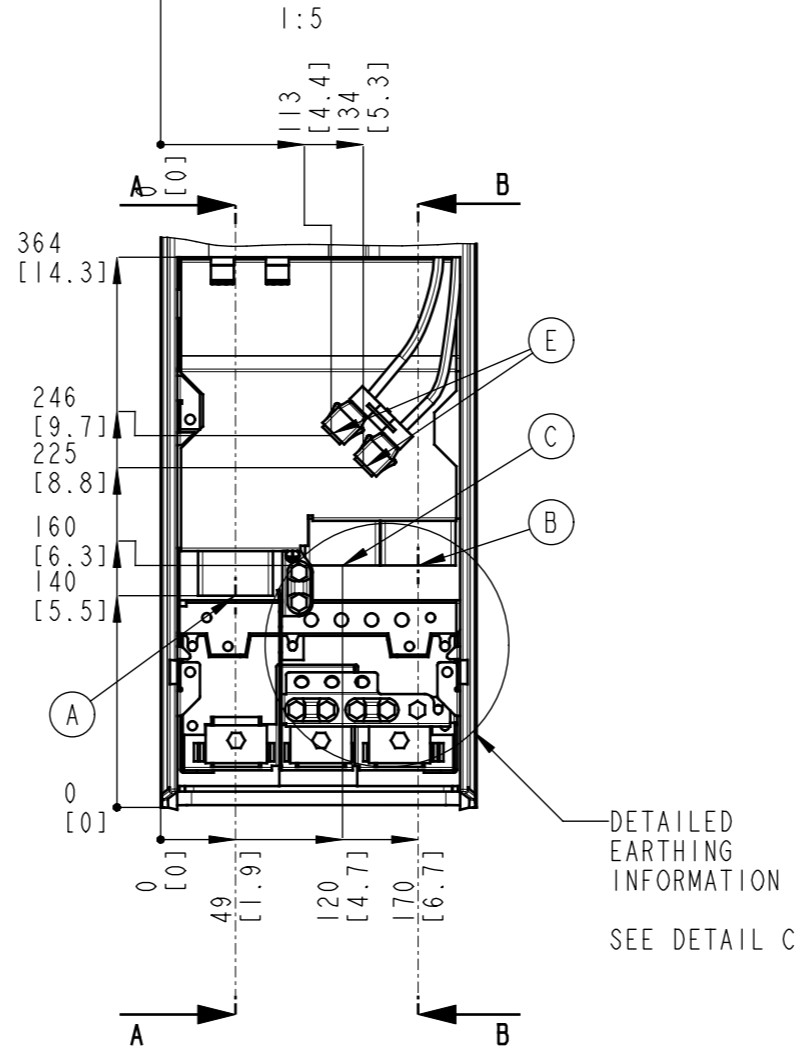
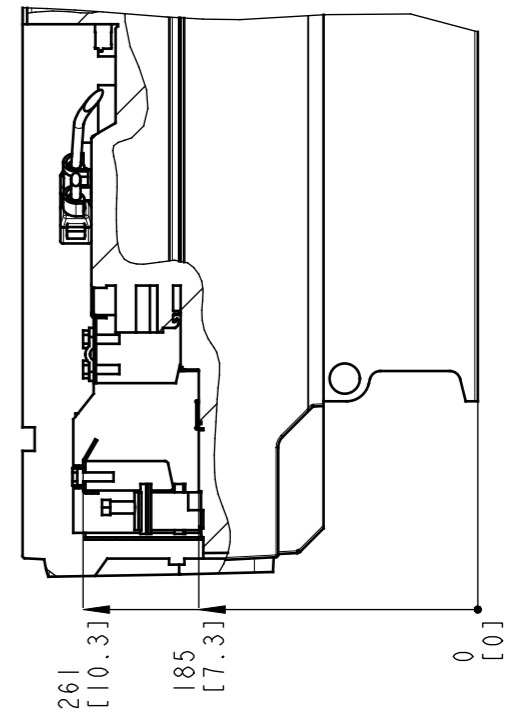
CENTER OF GRAVITY: FOR REFERENCE ONLY, THE PRODUCT CONFIGURATION MAY INFLUENCE THE CG IN ALL THREE AXES.

| | | | | | |
|---|---------|------------------------|------------|-----------------|----------------|
| UNLESS OTHERWISE SPECIFIED THE TOLERANCE IS ± 0.1 MM [0.4 INCH]. ALL DIMENSIONS ARE IN MILLIMETERS [INCH]. | | FIRST ANGLE PROJECTION | SCALE 1:10 | DRAWING SIZE A3 | MATERIAL |
| | | | | | FINISH |
| | | | | | DESCRIPTION |
| | | | | | MCAD_FK06_IP21 |
| CHANGED | | | | | DRAWING NUMBER |
| DESIGNED | Danfoss | | | | MCAD_FK06_IP21 |
| CHECKED | | | | | REV |
| PROPERTY OF DANFOSS A/S NORDBORG, DENMARK. TWO OR THREE DIMENSIONAL REPRODUCTION OF CONTENTS TO BE AUTHORIZED BY DANFOSS A/S. | | | | | MODEL |
| | | | | | MCAD_FK06_IP21 |
| | | | | | SHEET |
| | | | | | 1 OF 2 |

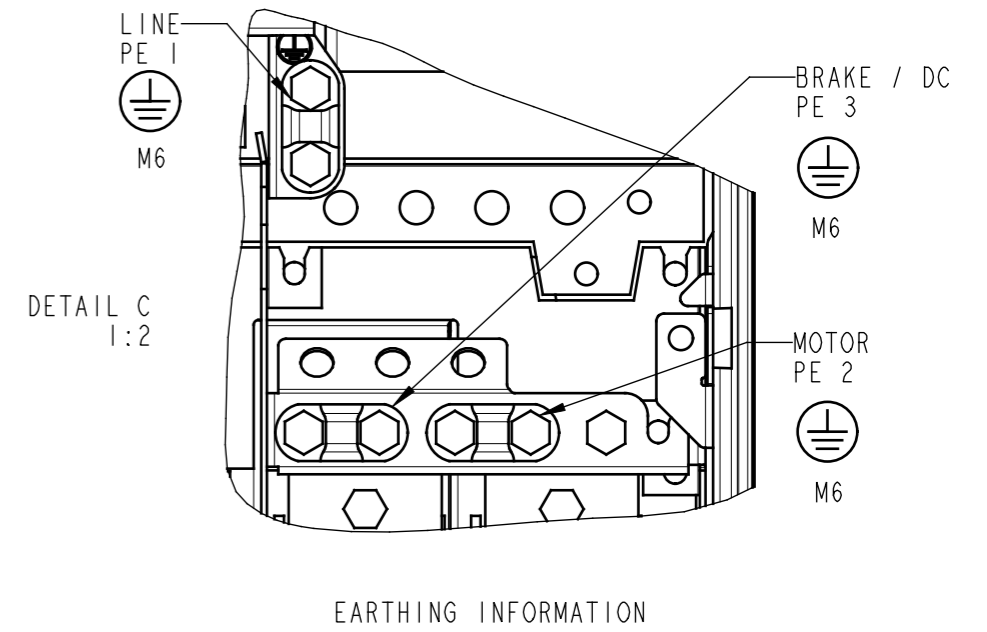
SECTION A-A
LINE TERMINALS



SECTION B-B
MOTOR TERMINALS



BOTTOM VIEW



| Position of connectors | |
|------------------------|-----------------|
| A | Line |
| B | Motor |
| C | Brake / DC |
| D | Interface X0 |
| E | Interface X1/X2 |

THIS DRAWING SHOWS THE MOST COMMON VERSION OF THIS PRODUCT VARIANT.
SMALL DIFFERENCES MAY OCCUR DEPENDING ON THE FINAL PRODUCT CONFIGURATION.

PROPERTY OF DANFOSS A/S NORDBORG, DENMARK. TWO OR THREE DIMENSIONAL REPRODUCTION OF CONTENTS TO BE AUTHORIZED BY DANFOSS A/S.

| DRAWING NUMBER | REV |
|----------------|--------|
| MCAD_FK06_IP21 | |
| MODEL | SHEET |
| MCAD_FK06_IP21 | 2 OF 2 |