



B&P Elektromotoren

Industrial Motors

Commercial & Appliance
Motors

Automation

Digital &
Systems

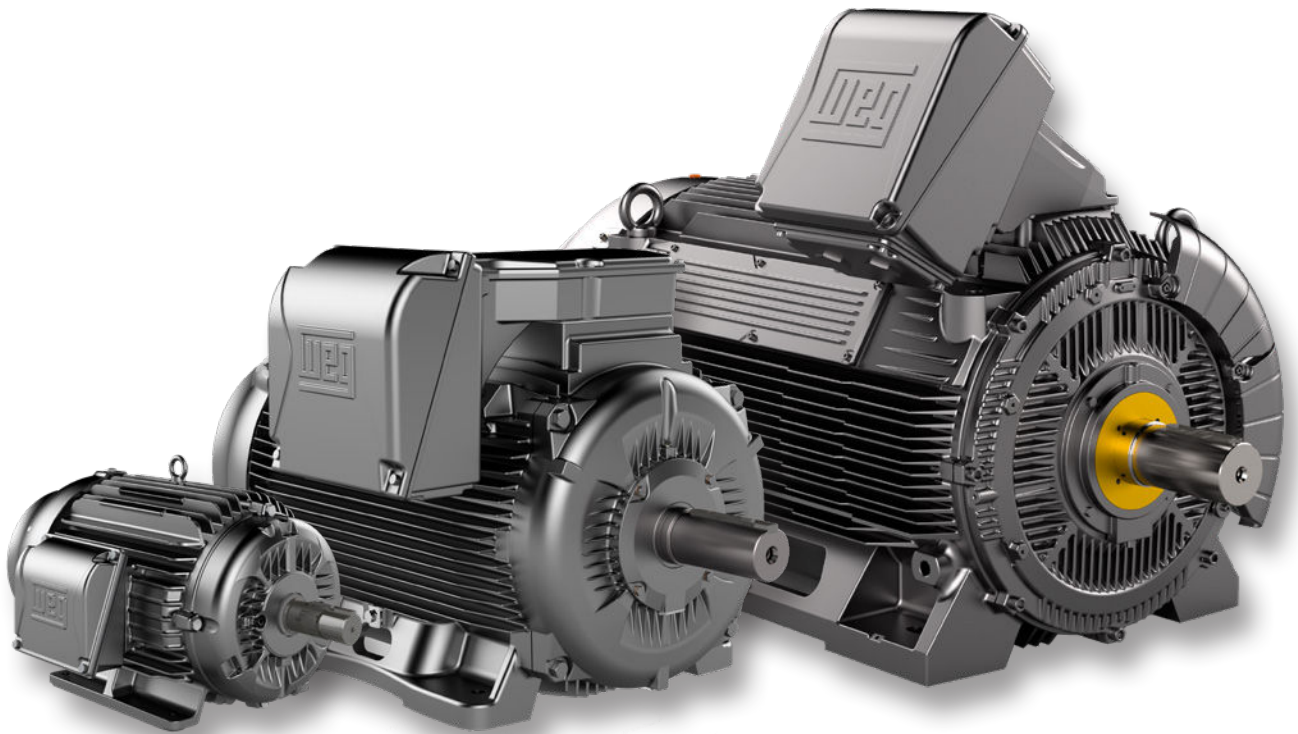
Energy

Transmission &
Distribution

Coatings

W23 Sync+

**Combining
technologies for a
great performance.**



Driving efficiency and sustainability



W23 Sync+

The W23 Sync+ line is at the forefront of efficiency in the industry, meeting the Ultra Premium (IE5) efficiency standard in accordance with IEC TS 600034-30-2:2016. Impressively, they reduced losses by 40% compared to the Premium efficiency (IE3).

The W23 Sync+ line is a clear indicator of WEG's dedication to research and development. It ensured top quality, provided measurable energy efficiency and resulted in a reduction of overall ownership costs.



Lower energy consumption



Easily interchangeable



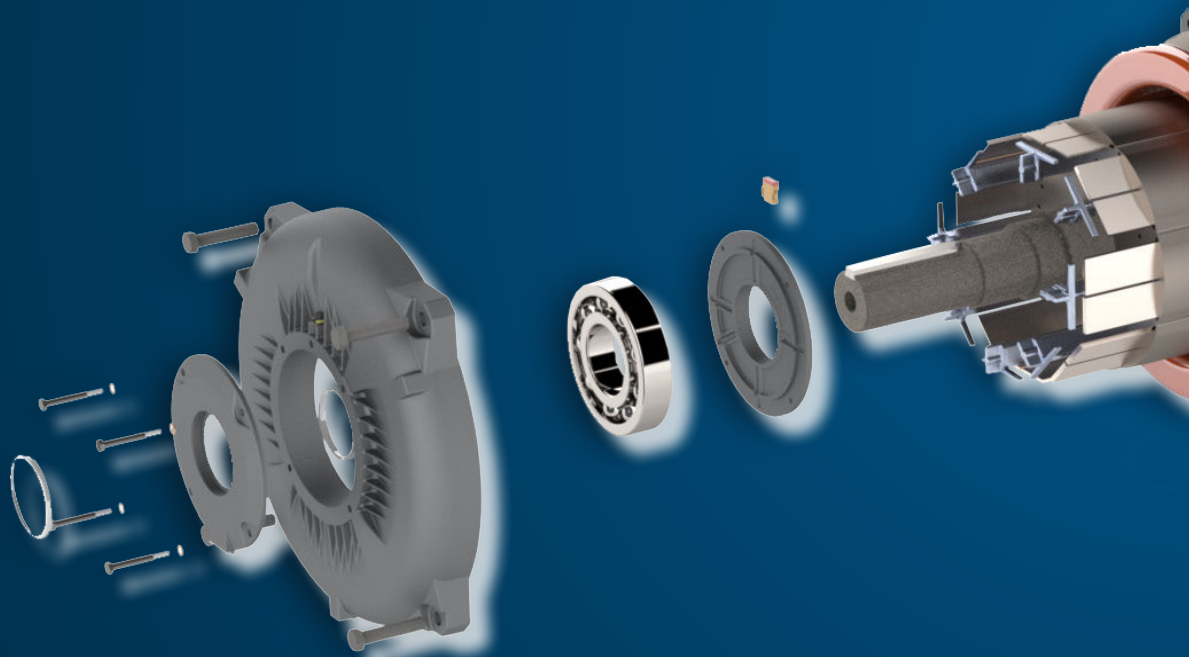
Low noise



Long life of components



High durability

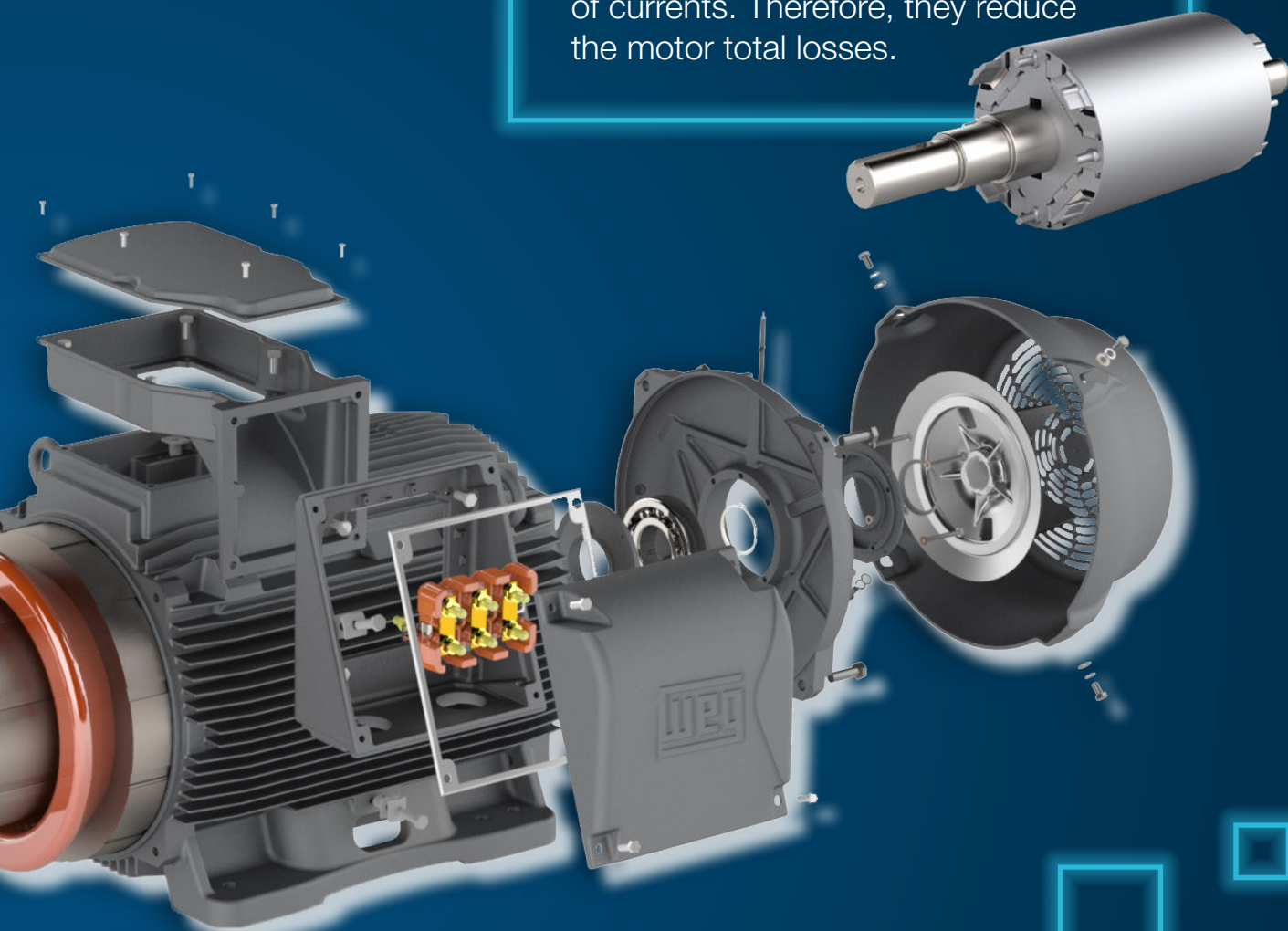


In terms of speed, the New W23 Sync+ motors maintain supreme efficiency irrespective of speed variations or load, leading to energy savings of up to 30% against induction motors with frequency inverters.

Furthermore, they operate over a vast speed spectrum while preserving torque without the need for external ventilation. Their inherent capability to maintain torque consistency even at varied speeds negates the need for blowers. Hence, they are perfect for tasks requiring adaptable speed and consistent torque.

The highest efficiency in rotor technology

The magnets generate their own magnetic field without requiring induction of currents. Therefore, they reduce the motor total losses.



General Characteristics

Power : 0.75 to 1250 kW
Frame : 80 to 450 H/G
Speed : up to 3600 rpm
Voltage : 400V

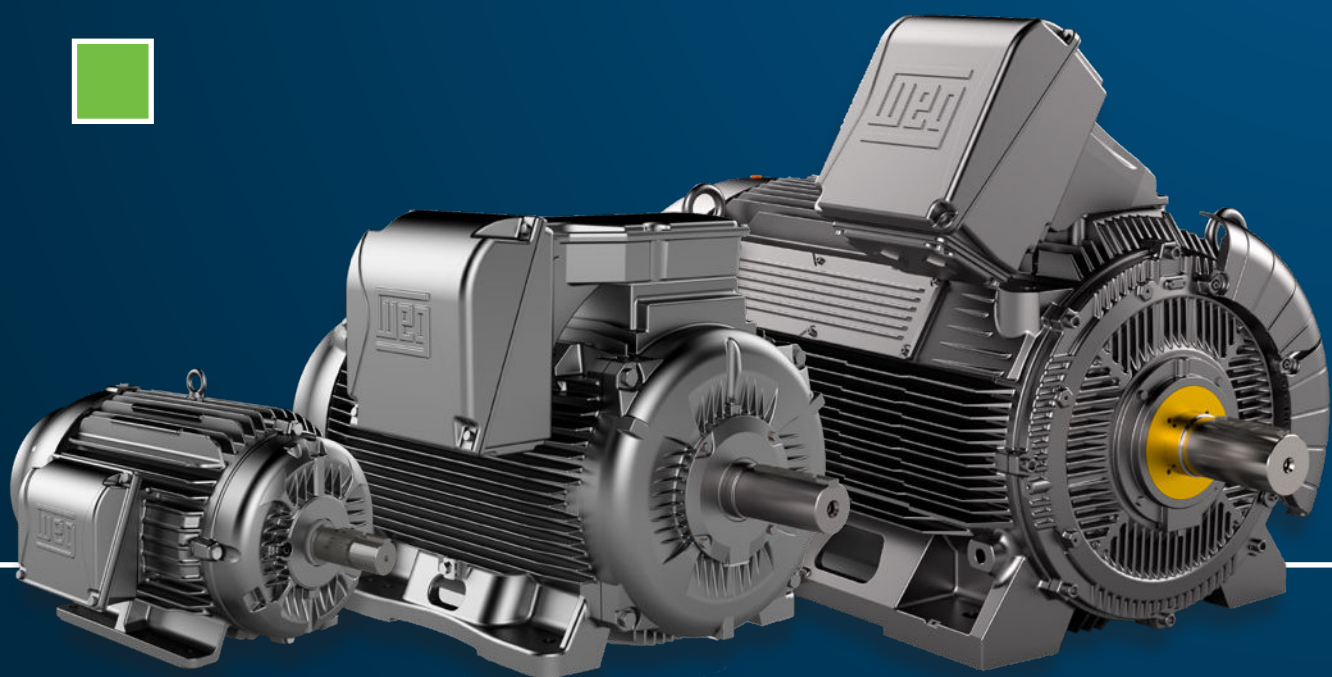
Protection Rating : IP55
Insulation : F (80K)
Service Factor : 1.0
Bearing type : Ball

Driving efficiency and sustainability



IE5

Ultra premium





The IE5 motors are designed to have **SUPERIOR ENERGY EFFICIENCY**, indicating a great capacity for conversion into useful mechanical energy.

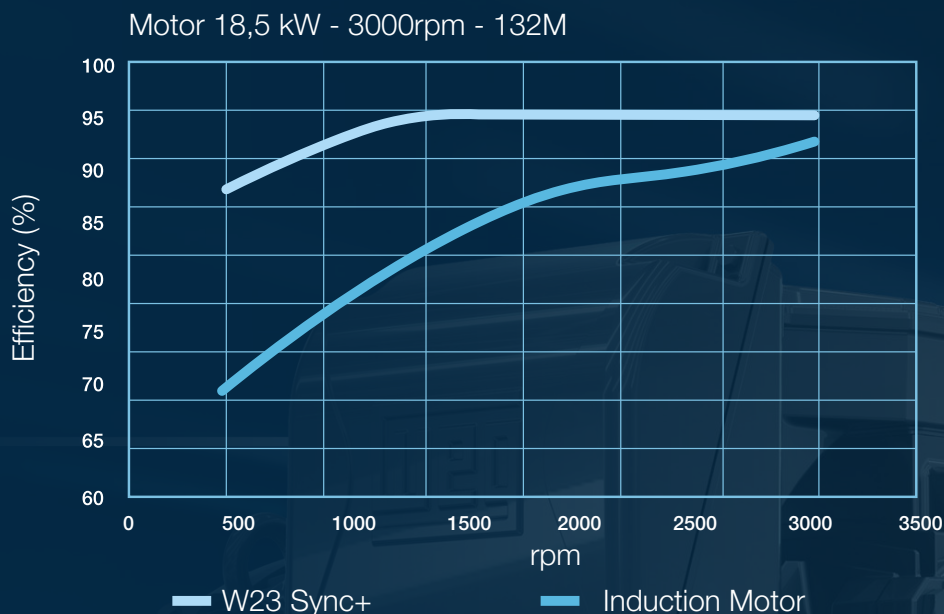
Which results in **LOWER ENERGY CONSUMPTION** and a consequent reduction in operating costs.



- **Energy Saving:** The efficiency of IE5 motors reduces energy consumption, benefiting the environment and cutting down costs for companies.
- **Compliance with Standards:** They meet or exceed international efficiency standards, ensuring compliance with local and global regulations.
- **Lower Heat Generation:** IE5 motors generate less heat, contributing to efficient operations and reducing the need for additional cooling.
- **Extended Service Life:** With advanced materials and technologies, IE5 motors have a longer lifespan, resulting in fewer replacements and maintenance jobs.
- **Performance at Variable Loads:** IE5 is efficient even at partial load, making it ideal for applications with load variations.
- **Sustainability:** The energy efficiency of IE5 motors contributes to sustainable practices, reducing the demand for natural resources and minimizing environmental impacts.

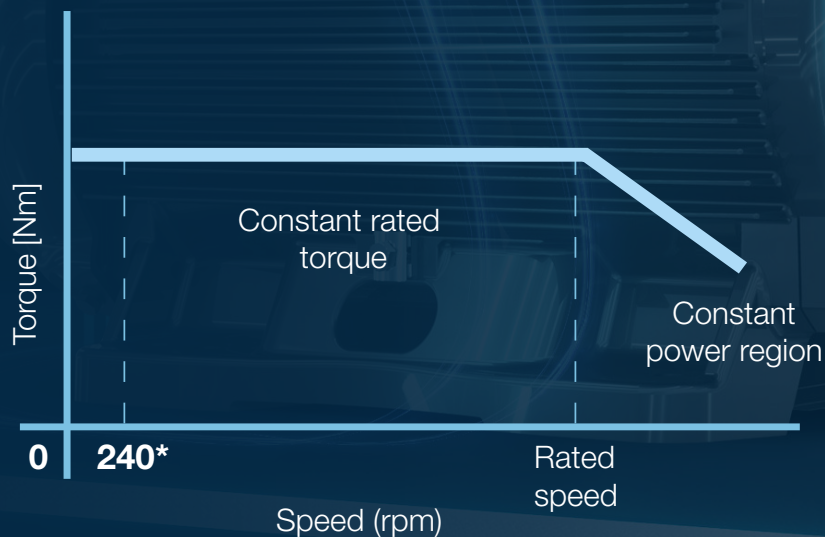
Efficiency x speed

The motors offer superior efficiency regardless of speed or load, saving up to 30% compared to VSD-driven induction motors.



Torque x Speed

The motors are suitable for operating over a wide speed range assuming constant torque and can operate at up to 10,000 rpm* in a constant power region.



* For more information, contact WEG.



WEG VSDs that can operate the motors of the W23 Sync+ line are models CFW500 (from firmware version V4.00 up) and CFW900 (from firmware version V1.09.00 up).

W23 Sync+

Combining technologies
for superior performance.



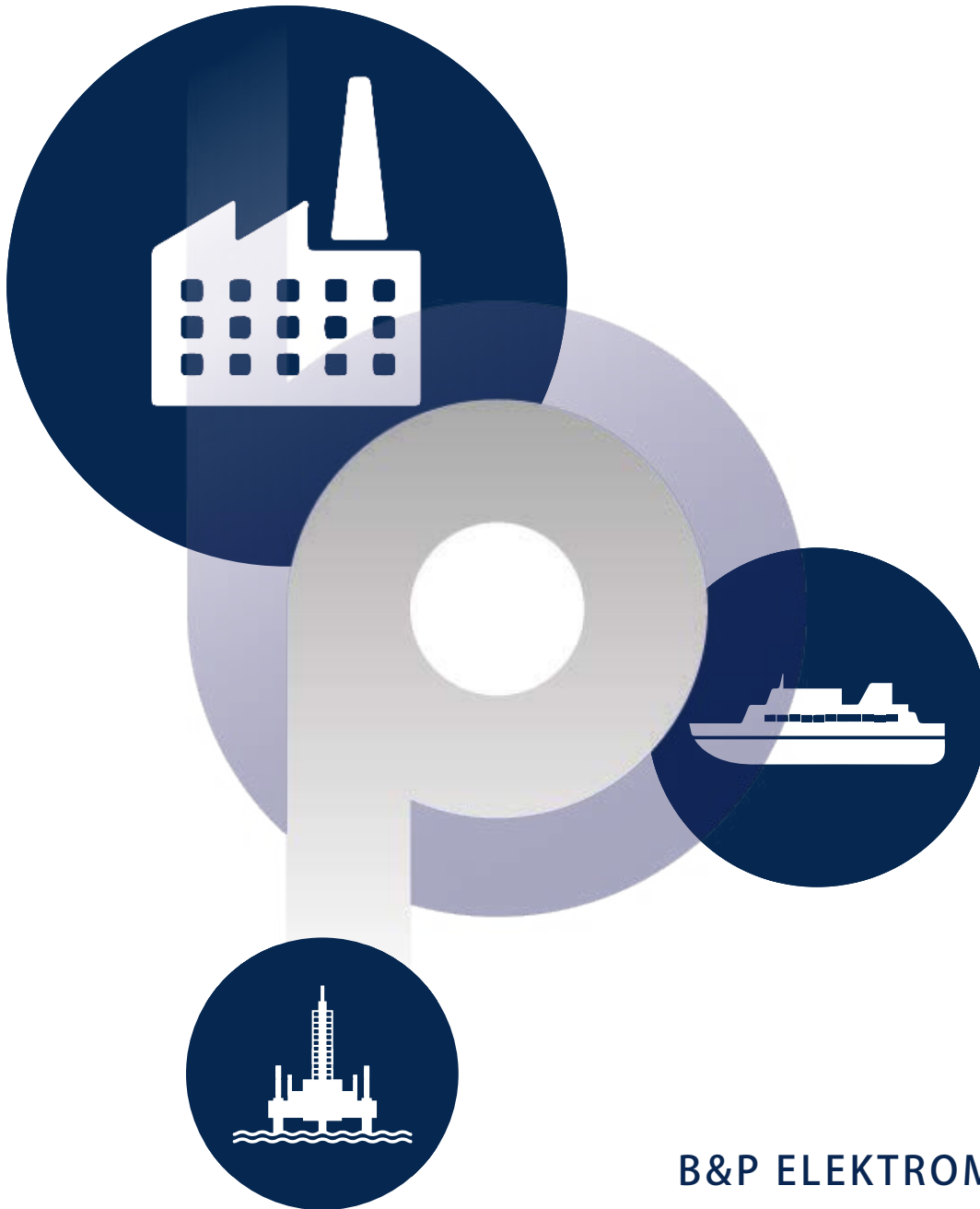
The search for sustainable innovation, as well as quality and trust in everything WEG thinks and does, resulted in the W23 Sync+. It is the largest line of synchronous electric motors with IE5 efficiency on the market.

With the same induction motor power-to-frame ratio, the new solution is innovative in all its features and superior on all levels.

Easily interchangeable, the W23 Sync+ was developed to provide maximum performance at all speeds. It is a perfect combination of technology and sustainability that consumes less energy and reduces CO2 emissions, generating a positive balance for the environment, with excellent cost-benefit.

Driving efficiency and sustainability





B&P ELEKTROMOTOREN BV

Exeditieweg 21
6657 KM Boven-Leeuwen

info@bnpelektromotoren.nl

+31 (0)344 616 267

BTW nr. NL819113918B01

KvK nr. 30237800

ING Bank NL60 INGB 0675 304 792



www.bnpelektromotoren.nl