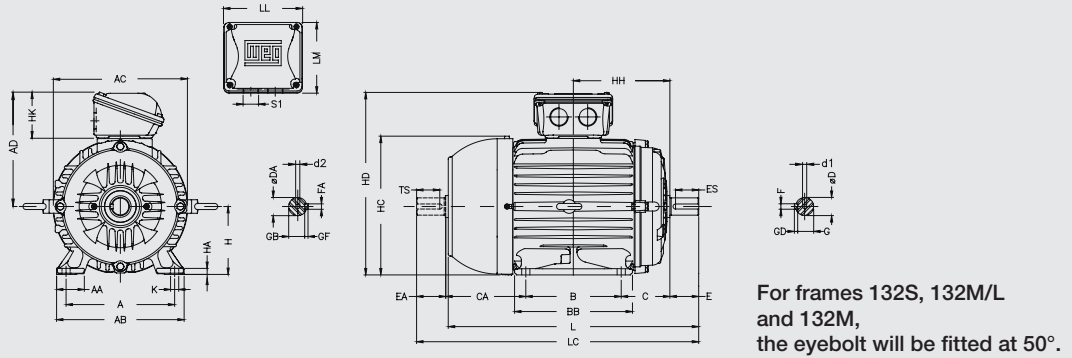


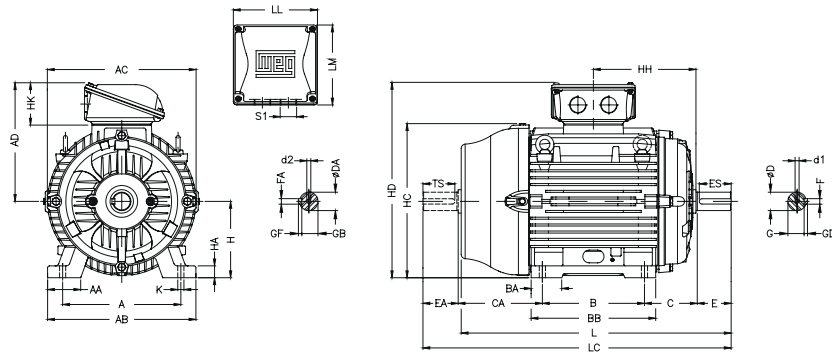
Mechanical Data

Foot Mounted Motors, Terminal Box Top

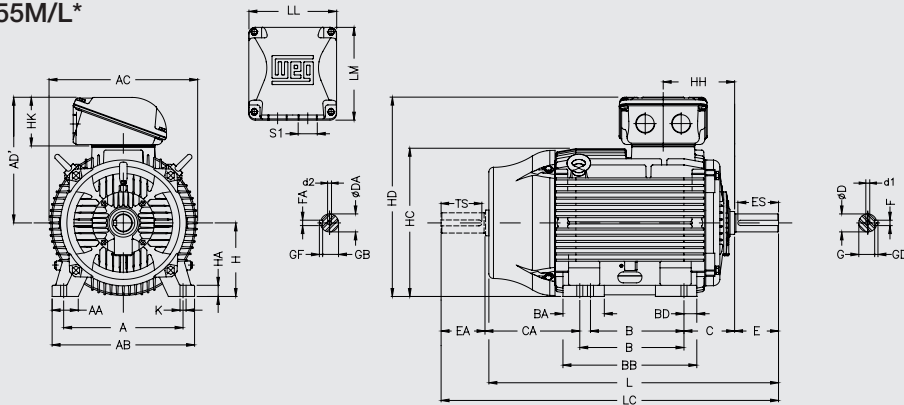
Frames 63 to L132M/L



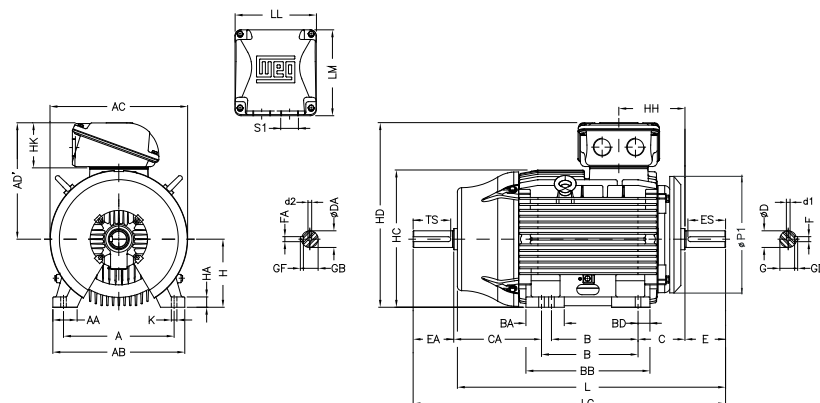
Frames 160M to 200L



Frames 225 to 355M/L*



Frame 355A/B*



*Some outputs in frame sizes 315 and 355 are equipped with an air deflector at the DE. In this case the dimension P1 will be 780mm and 880mm for frames 315 and 355 respectively.

Frame	A	AA	AB	AC	AD	AD'	B	BA	BB	BD	C	CA	DE Shaft end						NDE Shaft end						
													D	E	ES	F	G	GD	DA	EA	FA	TS	GB	GF	
63	100	25,5	116	125	123		80		95		40	78	11j6	23	14	4	8,5	4	9j6	20	3	12	7,2	3	
71	112	28,5	132	141	131		90		113,5		45	88	14j6	30	18	5	11	5	11j6	23	4	14	8,5	4	
80	125	30,5	149	159	140		100		125,5		50	93 118	19j6	40	28	6	15,5	6	14j6	30	18	11	5	5	
L80																									
90S	140	37	164	179	149		125		131		56	135	24j6	50	36	8	20	7	16j6	40	5	28	13	5	
L90S																									
90L																									
L90L																									
100L	160	40	188	206	159		140		173		63	118 162 128	28j6	60	45	8	24	7	22j6	50	6	36	18,5	6	
L100L																									
112M																									
L112M																									
132S	190	40,5	220	226	192		140		177		70	158							24j6		8	45	24	7	
L132S																									
132M																									
L132M/L																									
132S	216	45,5	248	272	220		178		225		89	150	38k6	80	63	10	33	8	28j6	60	8	45	24	7	
L132M/L																									
160M																									
L160M																									
160L	254	44	292	329	266		210	63	254		108	174	42k6						42k6		12	37	8	37	8
L160L																									
180M																									
L180M																									
180L	279	78	350	360	281		241	70	294		121	200	48k6	110	80				48k6	110	14	42,5	9	42,5	9
L180L																									
200L																									
L200L																									
225S/M*	356	80	436	455		384	286/311	124	412	41	149	319/294	55m6						55m6		16	49	10	49	10
L225S/M																									
250S/M*																									
L250S/M																									
250S/M	406	100	506	486		398	311/349	146	467	59	168	354/316	60m6	140	125				60m6		18	53	11	53	11
L250S/M																									
280S/M*																									
L280S/M																									
280S/M	457		557	599		472	368/419	151	517	49	190	385/334	65m6						60m6		18	58	11	58	11
L280S/M																									
315S/M*																									
L315S/M																									
315S/M	508	120	630	657		530	406/457	184	626	70	216	443/494	65m6	140	125	18	58	11	60m6	140	18	125	53	11	
L315S/M																									
315L*																									
L315L																									
355M/L*	610	140	750	736		620	560/630	230	760	65	254	483/413	75m6	140	125	20	67,5	12	60m6	170	22	160	71	14	
L355M/L																									
355A/B*																									
L355A/B																									
355A/B																									

Frame	H	HA	HC	HD	HH	HK	L	LC	LL	LM	S1	K	D1	D2	Bearing						
															DE	NDE					
63	63	7	130	186	80	59	216	241	108	98	2xM20x1,5	7	EM4	EM3	6201 ZZ	6201 ZZ					
71	71		145	202	90		250	276					DM5	EM4	6202 ZZ	6202 ZZ					
80	80	8	163	220	100		277	313					DM6	DM5	6204 ZZ	6203 ZZ					
L80							301	338													
90S	90	9	182	239	106	80	305	350	140	133	2xM25x1,5	10	DM8	DM6	6205 ZZ	6204 ZZ					
L90S					334,5		381	376									431				
90L					118,5		329	375									418	475			
L90L					360		406	423									478				
100L	100	10	203	259	133	101	452	519	198,5	190	2xM32x1,5	12	DM10	DM8	6206 ZZ	6205 ZZ					
L100L					476		544	423									478				
112M					489		557	452									519	476	544	423	478
L112M					489		557	476									544				
132S	132	16	274	352	159	101	476	544	198,5	190	2xM40x1,5	14,5	DM16	DM16	6308 ZZ	6207 ZZ					
L132S					489		557	476									544				
132M					190,5		515	582									476	544			
L132M/L					538,5		607	515									582				
160M	160	17	331	426	213	101	598	712	230	220	2xM50x1,5	18,5	DM20	DM20	6309 ZZ-C3	6209 ZZ-C3					
L160M					235		642	756									642	756			
180M					664		782	676									790	664	782		
L180M					706		824	664									782				
180L	180	28	366	461	241,5	101	706	824	230	220	2xM63x1,5	24	DM20	DM20	6311 ZZ-C3	6211 ZZ-C3					
L180L					260,5		702	820									702	820			
200L					744		862	702									820	744	862		
L200L					767		880	744									862				
225S/M*	225	34	453	609	212	153	856	974	269	285	2xM80x2	28	DM20	DM20	6312 ZZ-C3	6212 ZZ-C3					
L225S/M					886		1034	856									974				
250S/M*					965		1113	856									974	965	1113		
L250S/M					965		1113														
280S/M*	280	42	580	752	266	152	1071	1223	269	285	2xM63x1,5	28	DM20	DM20	6314 C3	6314 C3					
L280S/M					1244		1392	1071									1223				
315S/M*					1274		1426	1071									1223	1244	1392		
L315S/M					1355		1506	1244									1392				
315L*	315	48	644	845	264	176	1385	1536	379	382	2xM80x2	28	DM20	DM20	6316 C3	6316 C3					
L315L					1412		1577	1385									1536				
355M/L*					1482		1677	1412									1577				
L355M/L					1607		1772	1482									1677				
355A/B*	355	50	723	975	339	328	1607	1772	460	544	2xM80x2	28	DM24	DM24	6316 C3	6314 C3					
L355A/B					1083		340	1607									1772				
355A/B							1677	1872													

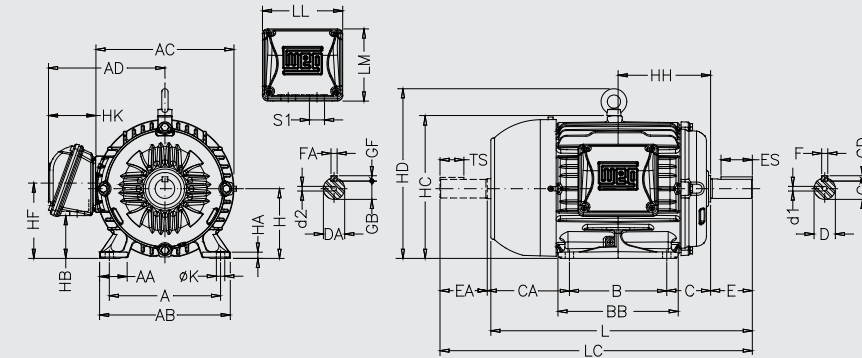
Notes:

(*) Dimension applicable to 2 pole motors.

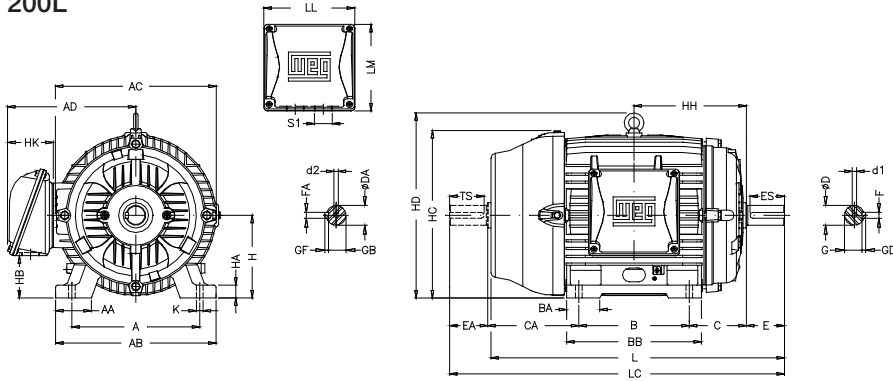
(**) All dimensions are in mm.

Foot mounted motors, Terminal Box Left or Right Side

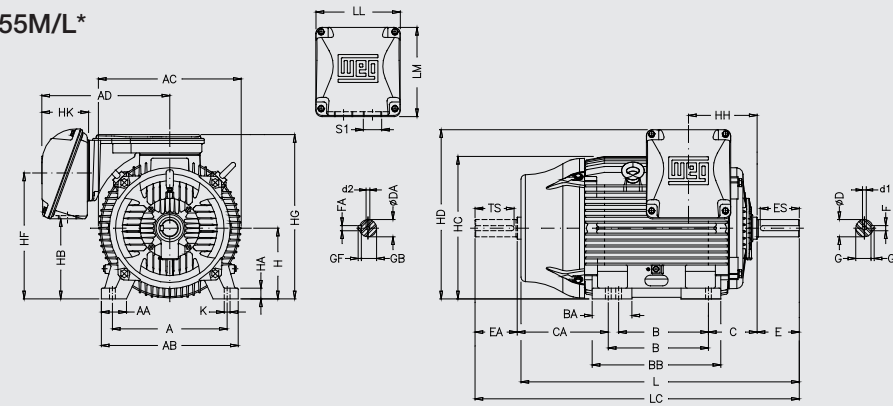
Frames 63 to 132M/L



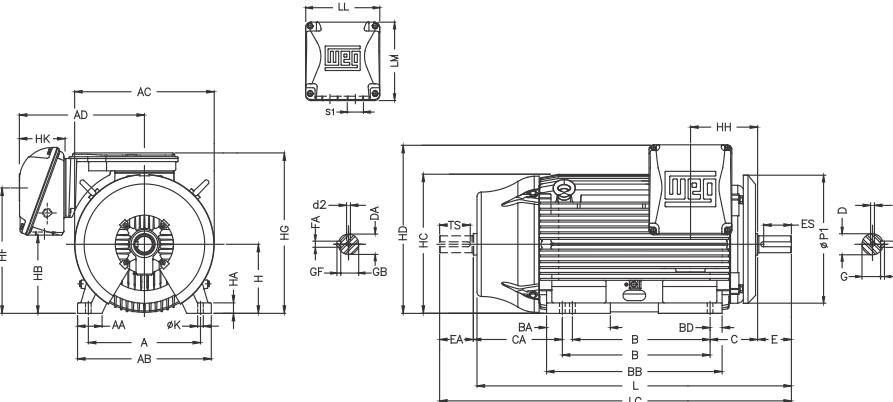
Frames 160M to 200L



Frames 225 to 355M/L*



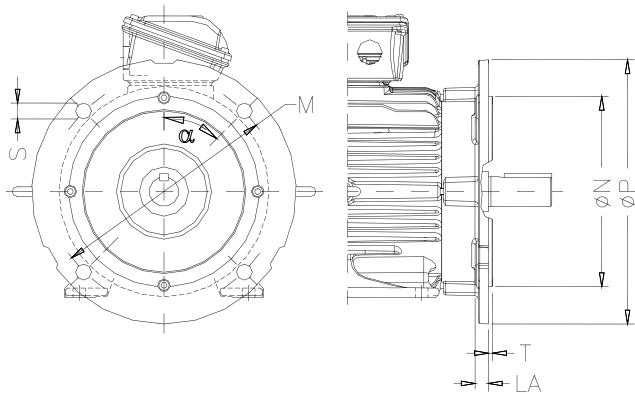
Frame 355A/B*



* Some outputs in frame sizes 315 and 355 are equipped with an air deflector at the D.E. In this case the dimension P1 will be 780mm and 880mm for frames 315 and 355 respectively

Flange Mounted Motors

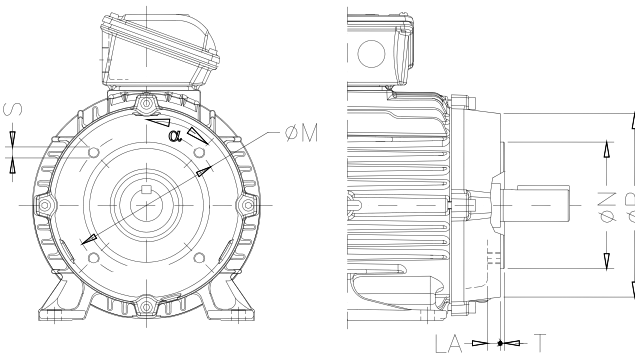
“FF” Flange



Frame	Flange	LA	M	N	P	S	T	α	N° of holes		
63	FF-115	5,5	115	95	140	10	3	45°	4		
71	FF-130	7	130	110	160						
80	FF-165	9	165	130	200	12	3,5				
90		10									
100	FF-215	12,5	215	180	250	15	4				
112	FF-265	12	265	230	300						
160	FF-300	18	300	250	350	19	5	22°30'	8		
180										FF-350	350
200	400	350	450								
225	FF-400	20	500	450	550					24	6
250	FF-500	18									
280		FF-600	22	600	550					660/780*	
280	FF-740	16	740	680	800/880*						
315S/M		315L				355					

*Only for motors fitted with air deflector in drive end side.
** Dimensions are in mm.

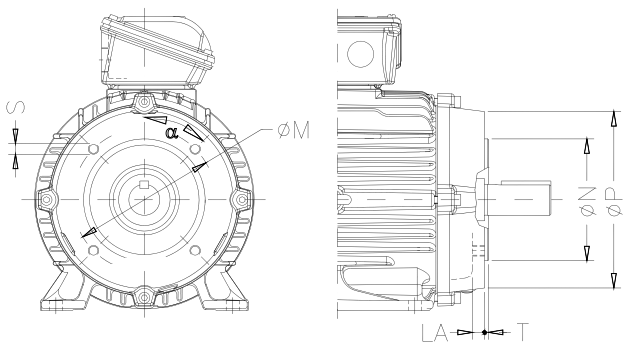
“C-DIN” Flange



Frame	Flange	LA	M	N	P	S	T	α	N° of holes
63	C-90	9,5	75	60	90	M5	2,5	45°	4
71	C-105	8	85	70	105	M6			
80	C-120	10,5	100	80	120		M8		
90	C-140	10,5	115	95	140				
100	C-160	12	130	110	160	M10	3,5		
112		13,5							
132	C-200	15,5	165	130	200				

* Dimensions are in mm.

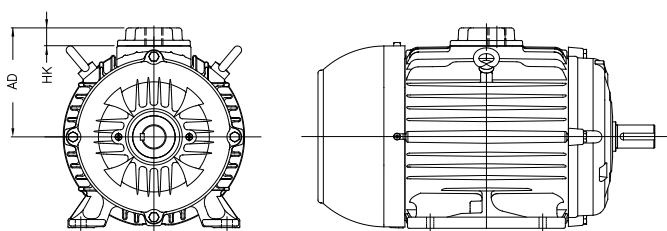
“NEMA C” Flange



Frame	Flange	LA	M	N	P	S	T	α	N° of holes
63	FC-95	4,5	95,2	76,2	143	UNC 1/4"x20	4	45°	4
71		10							
80		15							
90	FC-149	12	149,2	114,3	165	UNC 3/8"x16			
100		13,5							
112	FC-184	15,5	215,9	184,2	225	UNC 1/2"x13			
132		26							
160		20							
180	FC-228	20	266,7	228,6	280	UNC 5/8"x11	6,3	22°30'	8
200									
225	FC-355	25	406,4	355,6	455				
250		FC-368							
280	40								
315S/M	315L		355A/B						
355M/L	355A/B		33,5						

*Dimensions are in mm.

Dimensions for motors with terminal box base



Frame	Threaded hole ≤ M20 or 1/2"		Threaded hole > M20 or 1/2"	
	HK	AD	HK	AD
63	40	106	40	106
71		114		114
80	20	103	30	113
90		113		123
100		123		133
112	25	140	45	160
132		168		188

The optional terminal box base is not available in B30D, B30E, and B30T mountings.
*Dimensions are in mm.