	DOKUMENTIN NIMI / DOCUMENT NAME NCDrive & NCLoad Basic use.doc	
TALLENNETTU/SAVED 5/16/2005 3:47 PM	PAINOS / REVISION A	TEKI / PREPARED AhRa



B&P Elektromotoren

NCDrive & NCLoad Basic use

REVISION HISTORY:

REV	DATE/ PREPARED	NOTES
A	2005-5-16 AhRa	First draft.... !

Table of content:

1	GENERAL	4
2	NCDRIVE: PARAMETER SAVE	4
2.1	PARAMETERS	4
2.2	UPLOAD PARAMETER TO NCDRIVE.....	5
2.3	SAVING PARAMETER FILE	7
2.4	SAVE SERVICE INFO TO FILE WITH.....	8
2.5	CLOSE NCDRIVE.....	9
3	NLOAD: SYSTEM SOFTWARE DOWNLOAD	10
3.1	1. START THE NLOAD	10
3.2	BROWSE FOR RIGHT SYSTEM SOFTWARE	10
3.3	START DOWNLOAD	11
3.4	SELECT APPLICATION	12
3.5	CLOSE NLOAD.....	12
4	NCDRIVE: PARAMETERS TO DRIVE	13
4.1	OPEN THE SAVED PARAMETER FILE FROM NCDRIVE.....	13
4.2	DOWNLOAD PARAMETER TO DRIVE	13

1 General

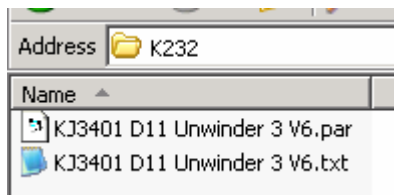
Purpose of this manual is show what to do with NCTools when e.g. drive is replaced.

2 NCDrive: Parameter save

2.1 Parameters

Before drive is changed be sure that you have parameters of that drive.

Usually these parameters are stored network hard drive or there is separate CD what are stored during commissioning. Name of the par file should be easy to understand and unique.



Folder K232 = Electrical room number

KJ3401 = Electrical closed number

D11 = Drive number, profibus, device net, modbus etc.

Unwinder 3 = Verbal name

V6 = Parameter version number

*.txt (Service info) file is Notepad file so it is possible to read parameter even you do not have NCDrive installed in your PC.

*.par actual parameter file used by NCDrive.

If you do not have par files available, you can use NCDrive to upload parameters from the drive, use keypad to copy parameter to new drive, use old control board or make commissioning again.

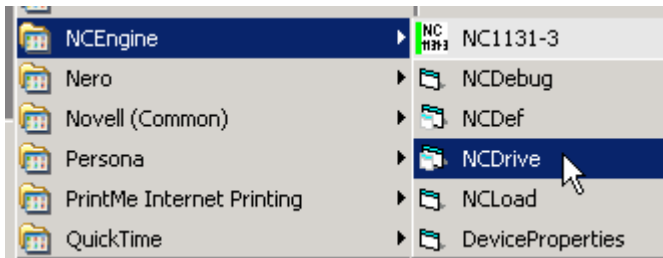
2.2 Upload parameter to NCDrive.

You need to have power in control board.

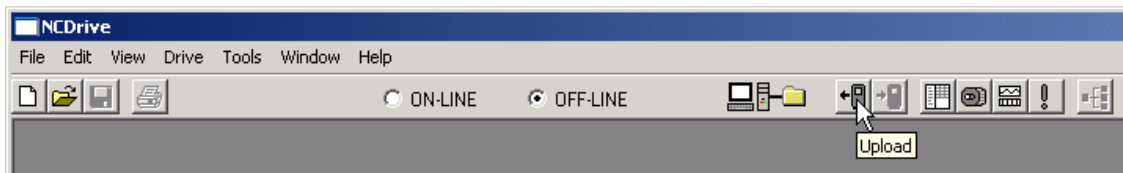
1. Connect RS-232 cable to frequency converter.

The frequency converter is connected to the computer's serial port via an RS232 cable. The RS232 connector at the frequency converter is available after removal of the control panel. The cable uses only the pins 2, 3 and 5 so that, at the one end, the pin 2, 3 and 5 are connected to the respective pins at the other end.

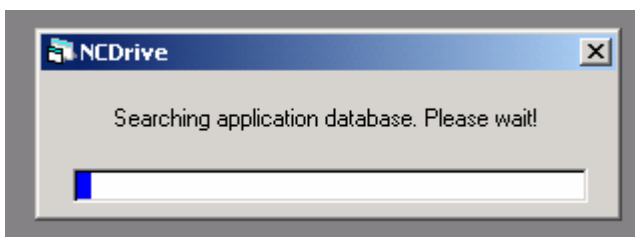
2. Start the NCDrive



3. Press upload button



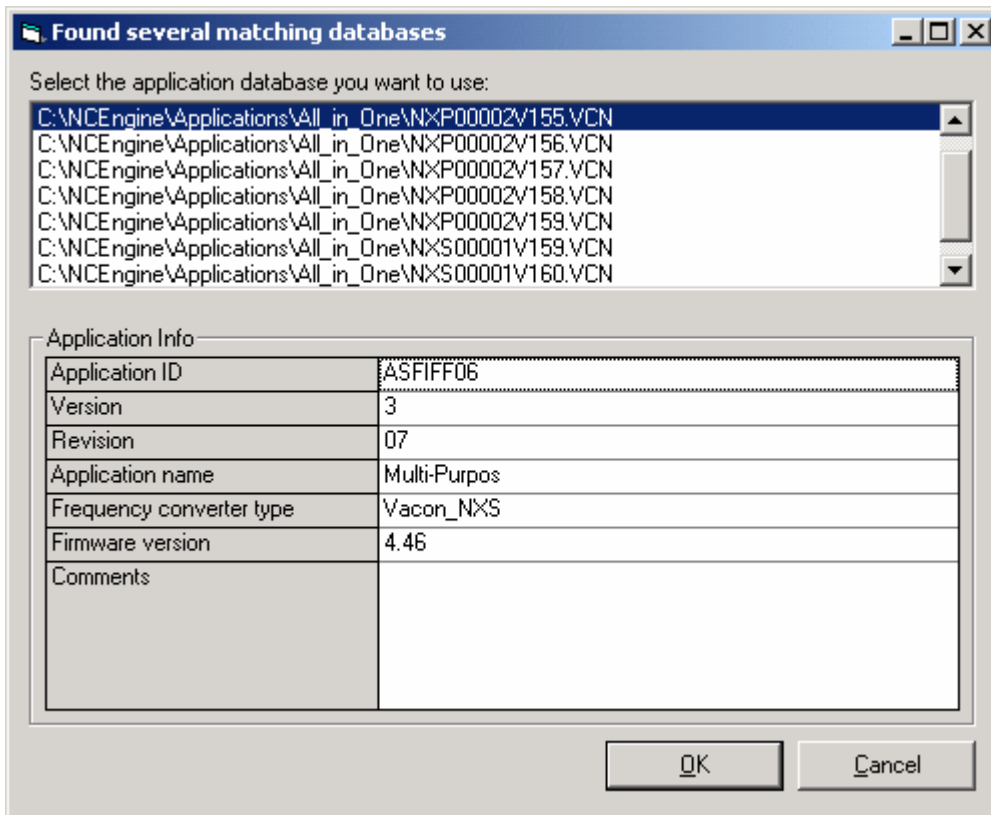
NCDrive will check what application is active in frequency converter and search same one from PC,



Note that NCDrive can find application only if these are in **C:\NCEngine\Applications** Folder

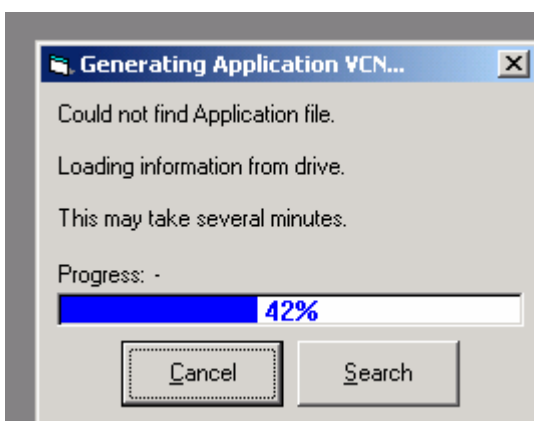
3a

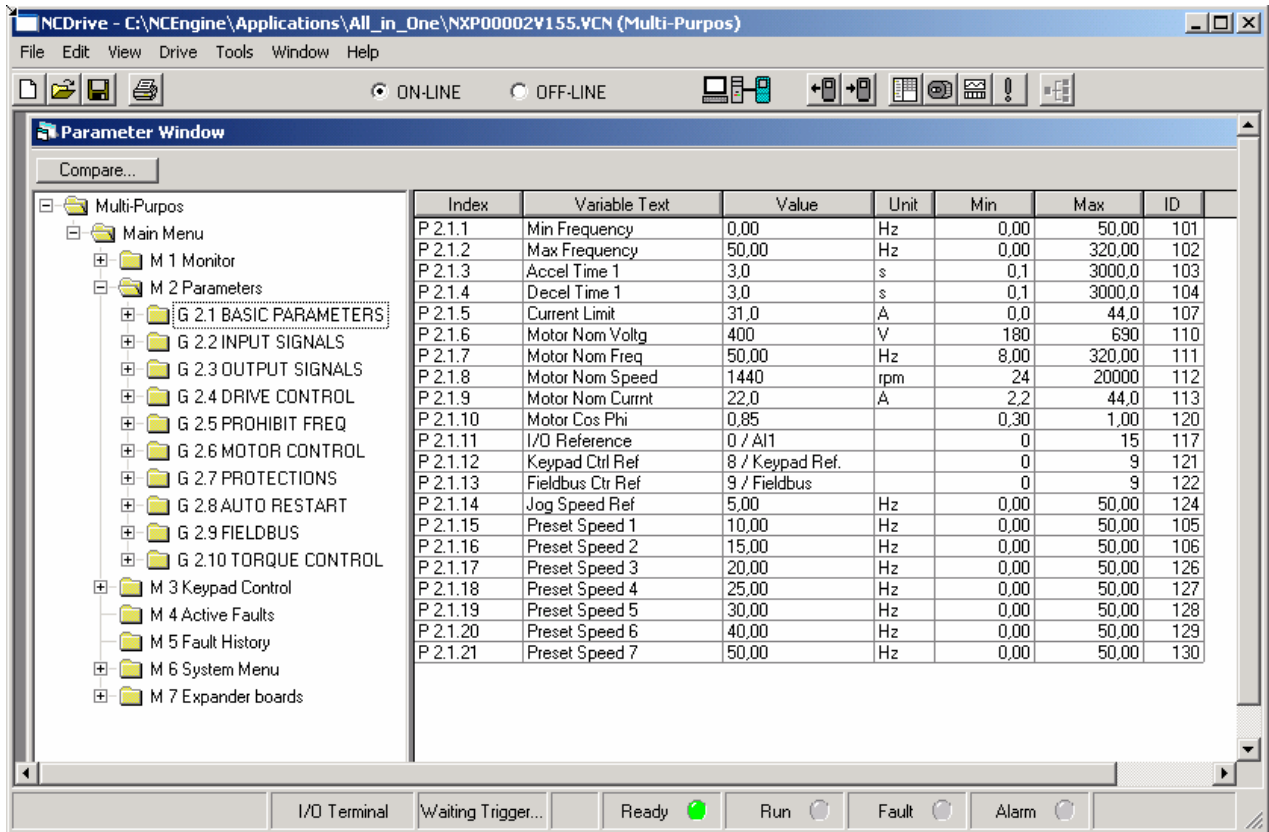
There may be cases when there is several system software where is same application, then you need to just select one of those.



3b

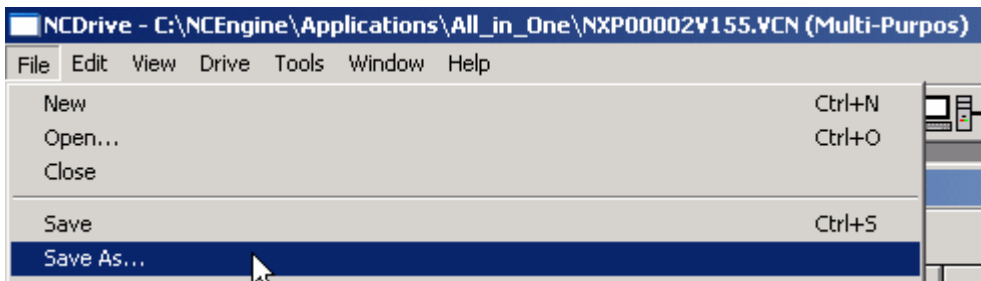
There may be cases when appropriate application can not be found from PC, then there is possibility to generate application vcn. This generated application can not be loaded to Drive but its allows you to use NCDrive for parameterization and monitoring.

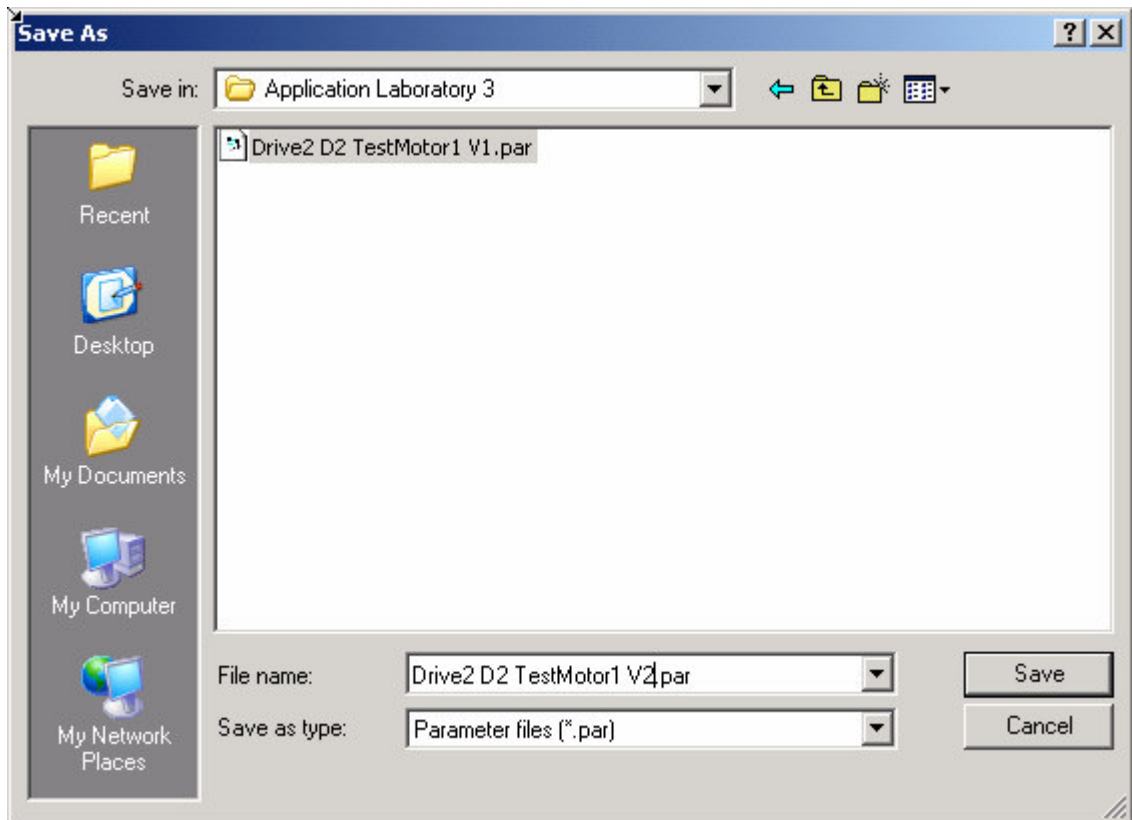




2.3 Saving parameter file

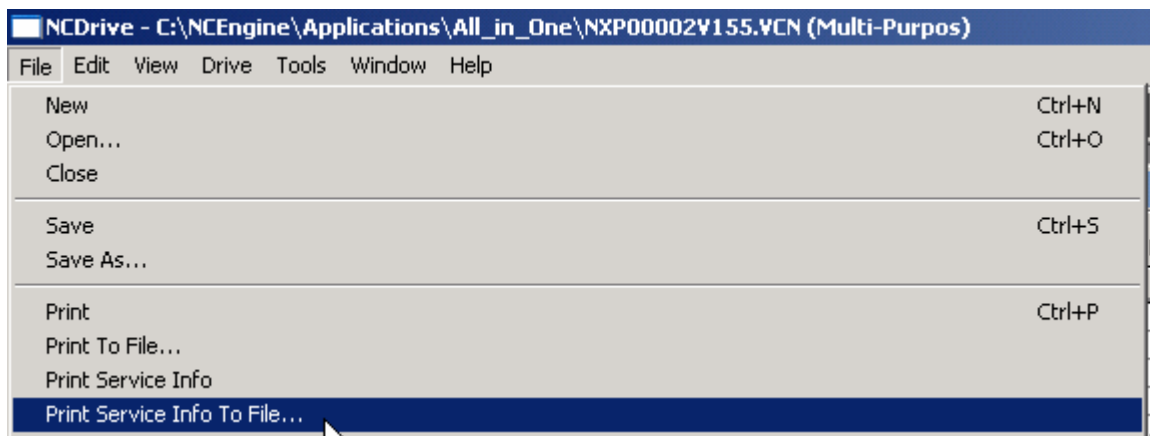
When parameter window is active select File > Save As...



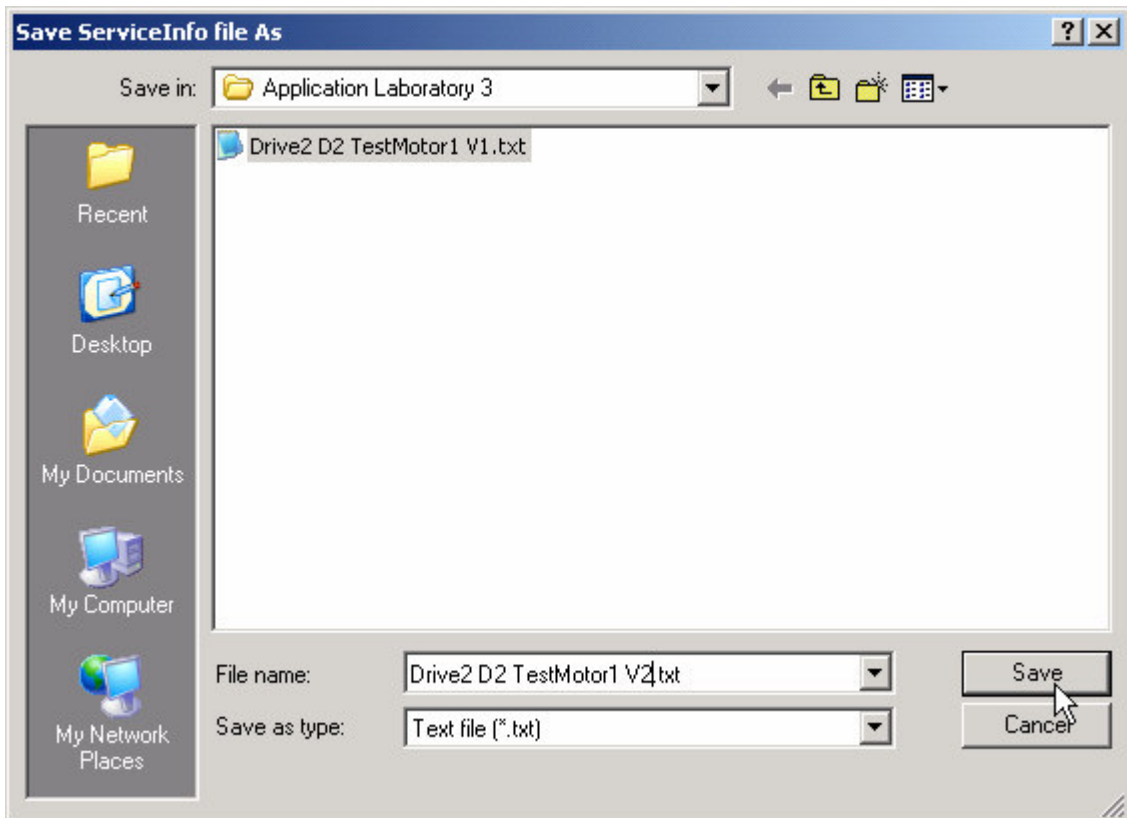


- Application Laboratory 3 = Electrical room number
- Drive2 = Electrical closed number
- D2 = Drive number, profibus, device net, modbus etc.
- TestMotor1 = Verbal name
- V2 = Parameter version number

2.4 Save service info to file with

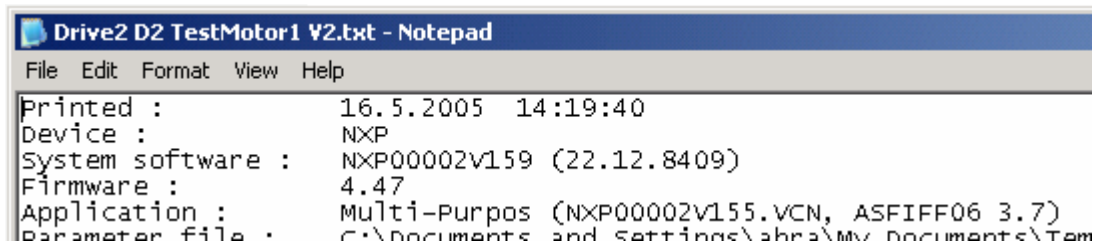


Use same name than for par file

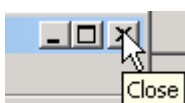


Address Application Laboratory 3				
Name	Size	Type	Date Modified	
Drive2 D2 TestMotor1 V1.par	180 KB	PAR File	16.5.2005 14:12	
Drive2 D2 TestMotor1 V1.txt	31 KB	Text Document	16.5.2005 14:13	
Drive2 D2 TestMotor1 V2.par	180 KB	PAR File	16.5.2005 14:19	
Drive2 D2 TestMotor1 V2.txt	31 KB	Text Document	16.5.2005 14:19	

from the service info its easy to see what was used application and what was used system software.

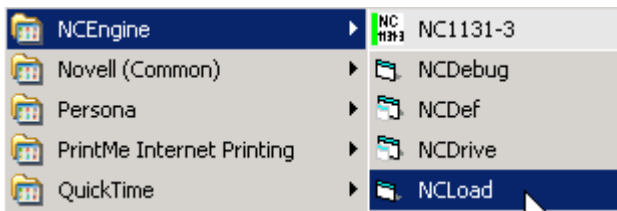


2.5 Close NCDrive

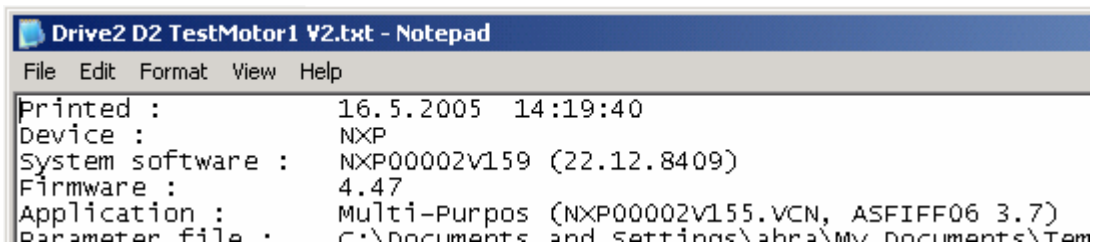


3 NCLoad: System software download

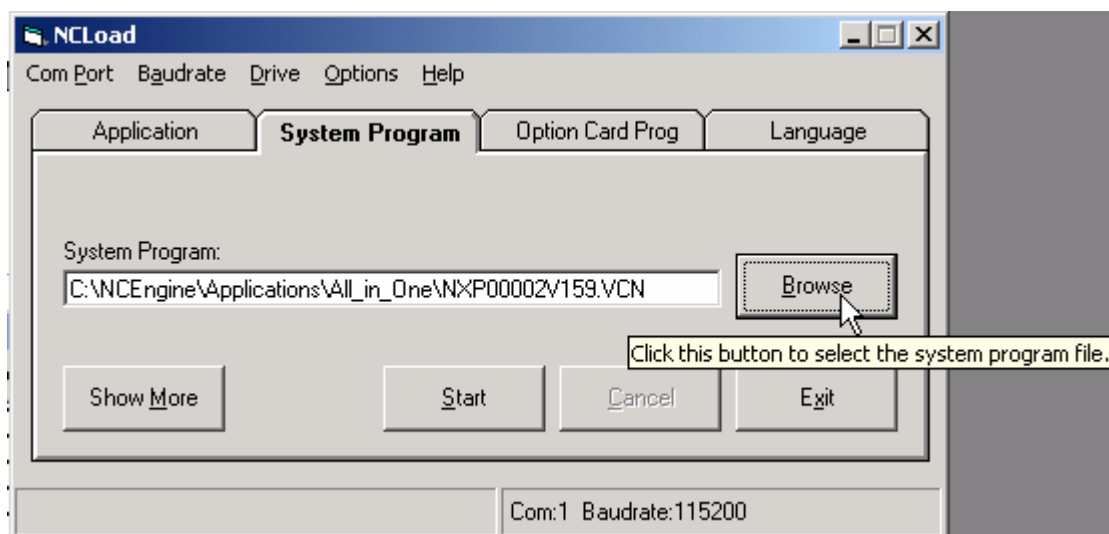
3.1 1. Start the NCLoad

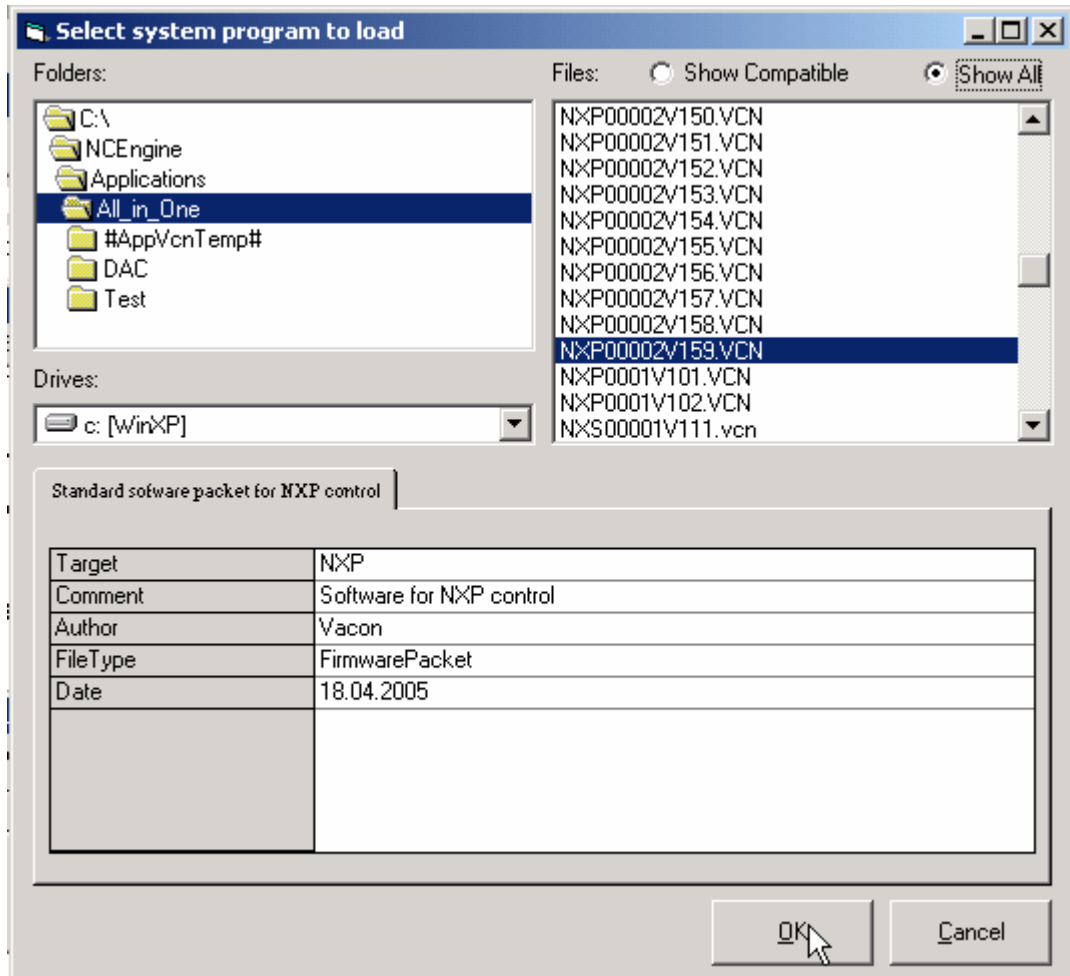


It is recommended to use same system software and application version than was in replaced unit.



3.2 Browse for right System software

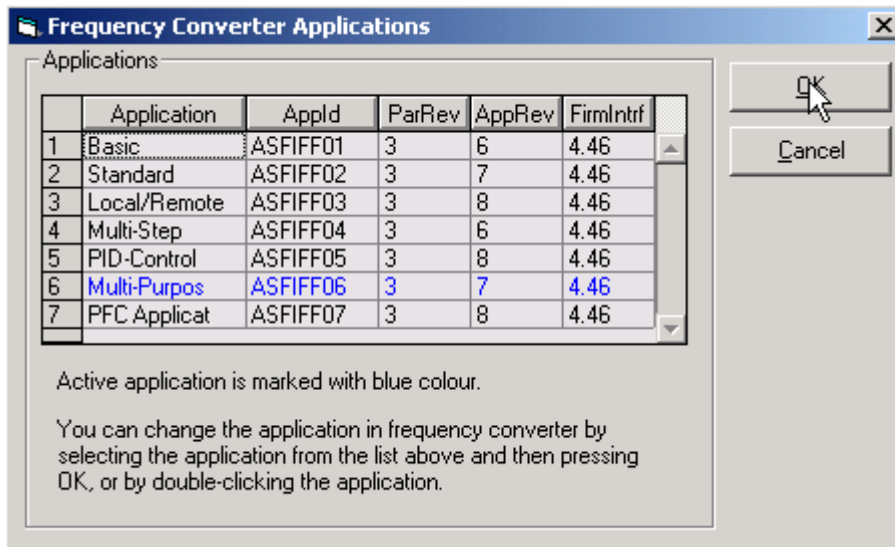
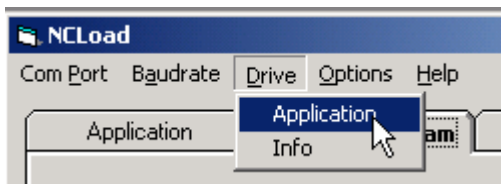




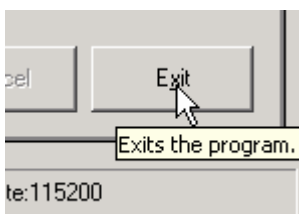
3.3 Start download



3.4 Select application

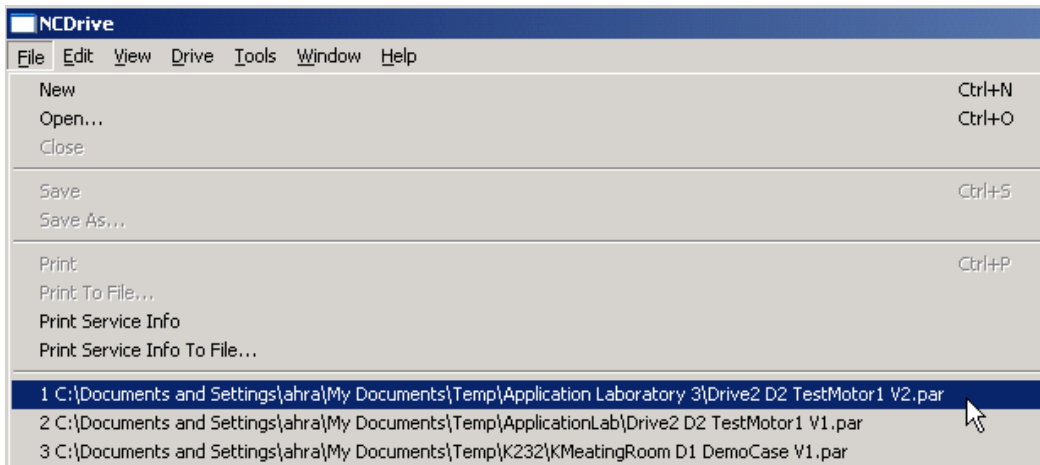


3.5 Close NCLoad

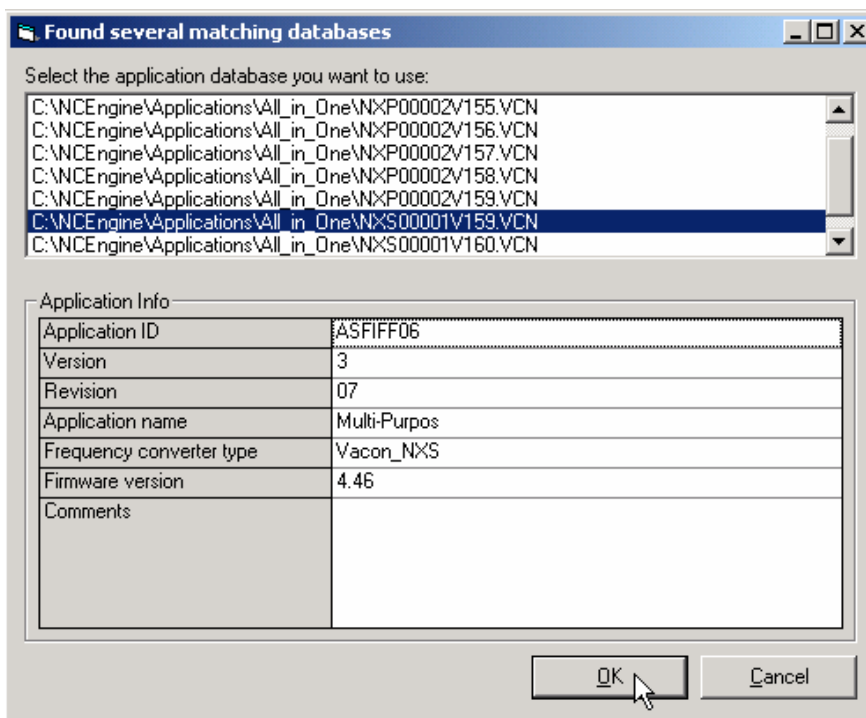


4 NCDrive: Parameters to drive

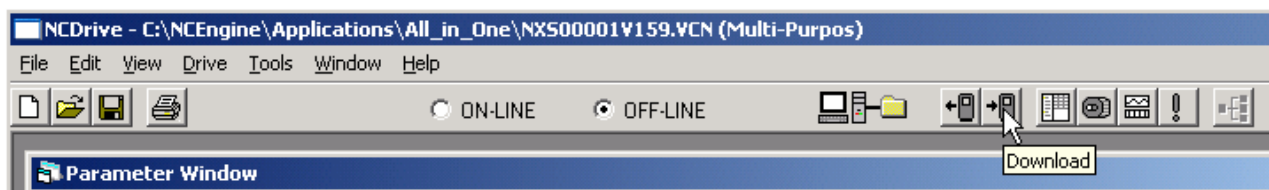
4.1 Open the saved parameter file from NCDrive

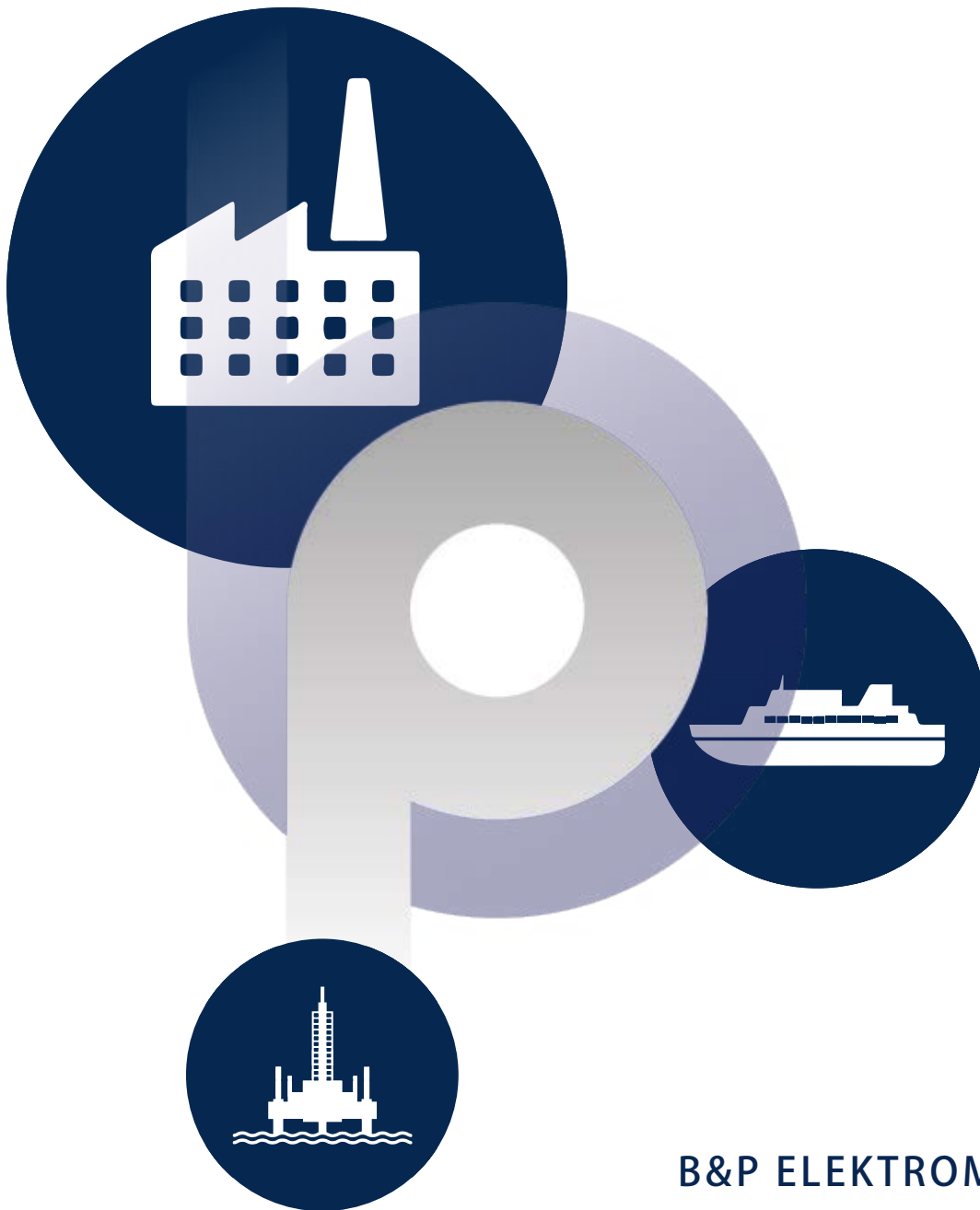


If several system software are found us the one what is loaded to drive



4.2 Download parameter to drive





B&P ELEKTROMOTOREN BV

Expeditiweg 21
6657 KM Boven-Leeuwen

info@bnpelektromotoren.nl

+31 (0)344 616 267

BTW nr. NL819113918B01

KvK nr. 30237800

ING Bank NL60 INGB 0675 304 792



www.bnpelektromotoren.nl